

Installation Instruction

LCRM Demo Ssoftware

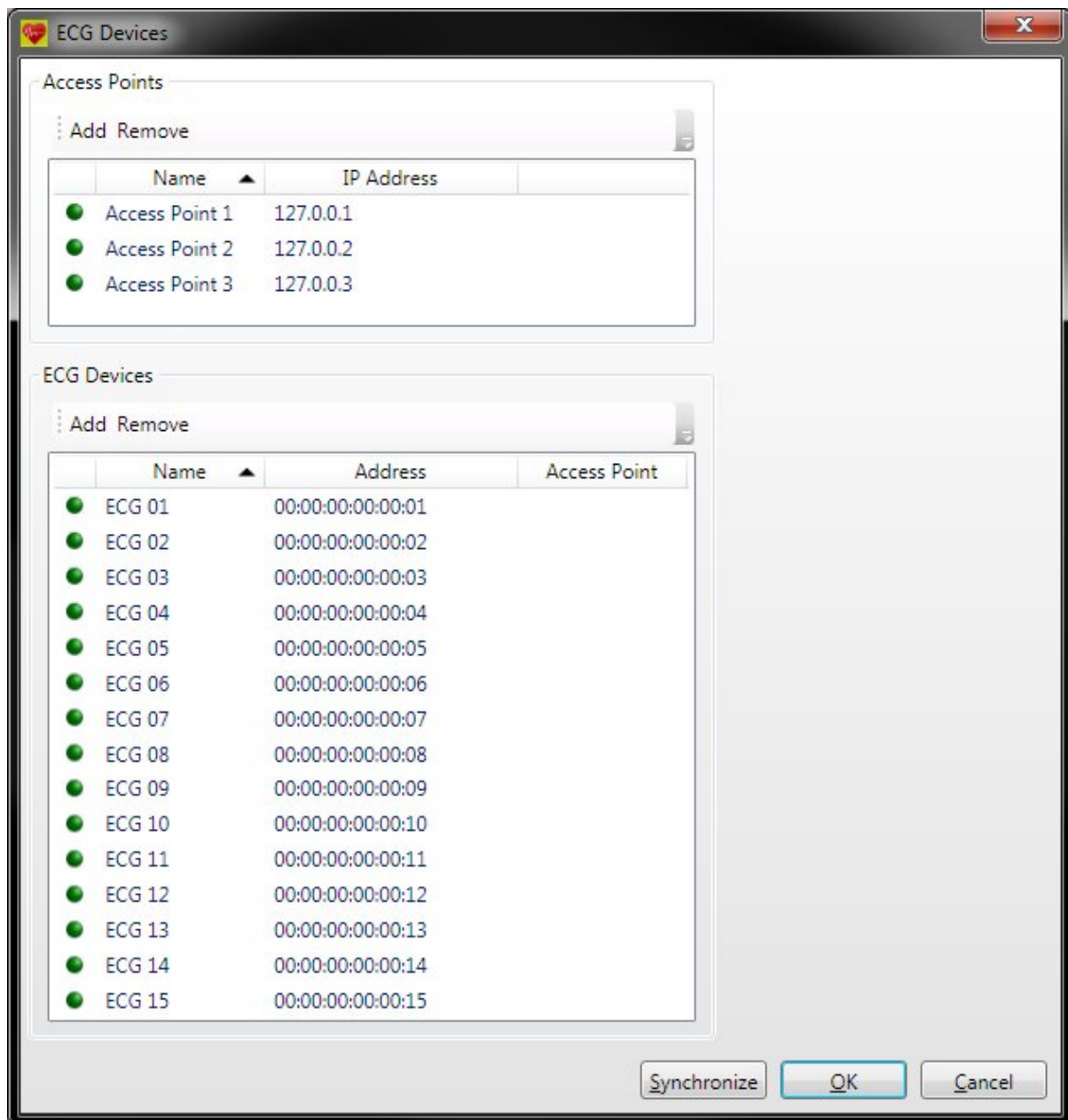
(document version 1.00)



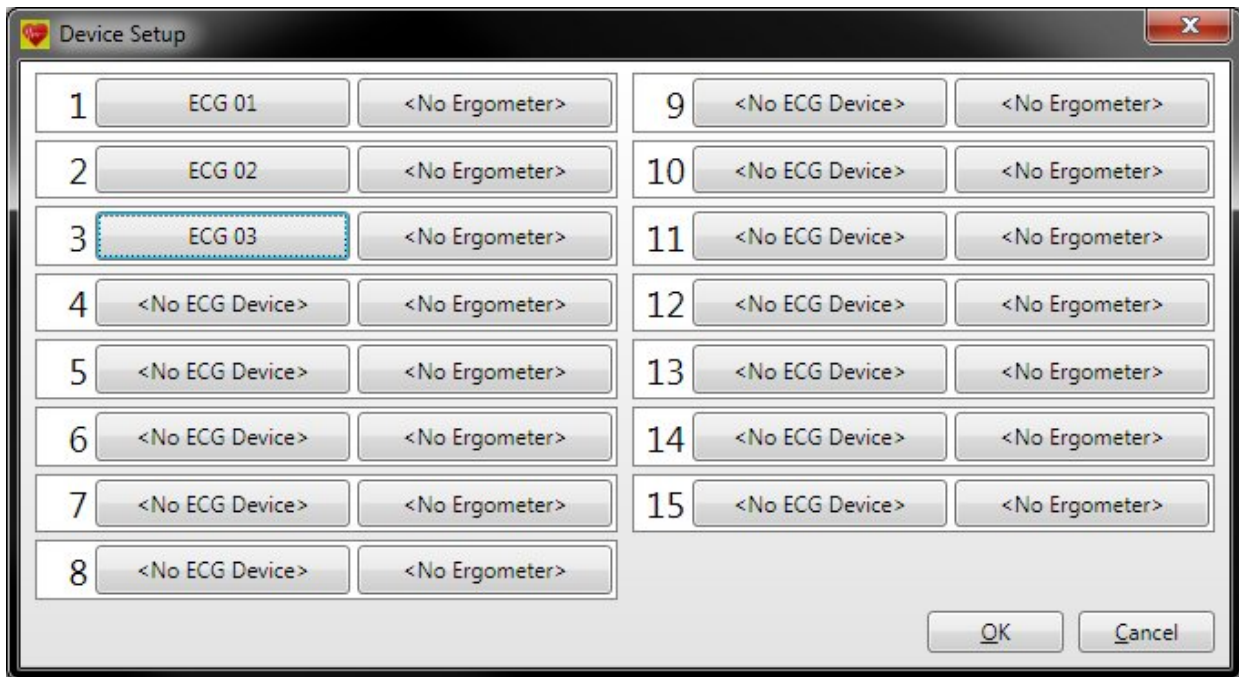
Lode BV
Zernikepark 16
9747 AN Groningen
The Netherlands
Tel: +31 50 5712811
Fax: +31 50 5716746
E-mail: service@lode.nl
Internet: www.lode.nl

CE
0344

- 1) Unzip the file "LCRM Demo (ECG Only) 24-04-2012.zip". It contains 2 folders: Device Simulator and Release). You can start the Device Simulator by double clicking on the file DeviceSimulator in the folder Device Simulator. This should be done before starting LCRM for a demonstration.
- 2) Install LCRM by double clicking on the file *setup* in the release folder.
- 3) Start LCRM. The program will now ask you for a license file. Choose here "Import Licenses..." and look for the License.xml in the unzipped file.
- 4) After this, the main screen is shown. Now go to 'Control -> ECG Devices' in the menu. On the screen you will find on the upper left side a list with access points and under that a list with ECG devices. Next to each ECG device a green ball should be shown. (see graphic):



- 5) Add 1 or more subjects via the dialog screen in 'Control->Subjects'
- 6) Through the menu item 'Tools->Device Setup' ECG device scan be connected with ergometer slots in the main screen. This looks as follows:

**Attention:**

when a LCRM version is already installed on the demo PC, LCRM will not ask directly for license codes. You will have to import these codes through 'Tools->Authorisation' in the menu (again through 'Import Licenses...' button). Here you will also have to add ECG devices in the screen "ECG devices" (see graphic mentioned at step 4 of this instruction).